

## Specification Sheet LX 3012

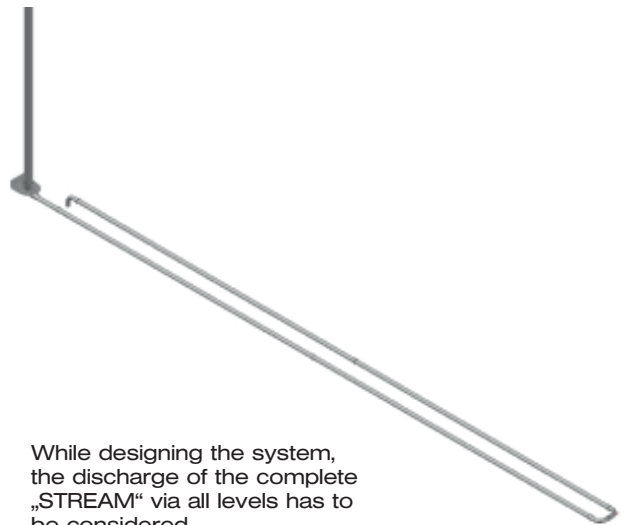
# LORO-X DUOSTREAM Cascade drainage „L” measurement

**Main drainage**

**Gravity flow**

**Silent**

<b>Discharge rate:</b>	<b>up to max. 5.1 l/s</b>
<b>Water height:</b>	<b>35 mm</b>
<b>Roof penetration:</b>	<b>-</b>
<b>Diameter:</b>	<b>DN 100</b>
<b>LX-Number:</b>	<b>LX 3012</b>
<b>Weir height:</b>	<b>0 mm</b>
<b>Drain:</b>	<b>ventilated</b>
<b>Downpipe:</b>	<b>ventilated</b>
<b>Downpipe height:</b>	<b>min. 2.5 m</b>
<b>Drainage:</b>	<b>into ground pipe</b>
<b>Flange:</b>	<b>bonding flange</b>



While designing the system, the discharge of the complete „STREAM“ via all levels has to be considered

### LX 3012 Piece list

**1 x Art.-No. Choose drain on page 2!**

1 x Art.-No. 13242.DB0X Roof terrace deflection

1 x Art.-No. 01401.100X Pipe with one socket

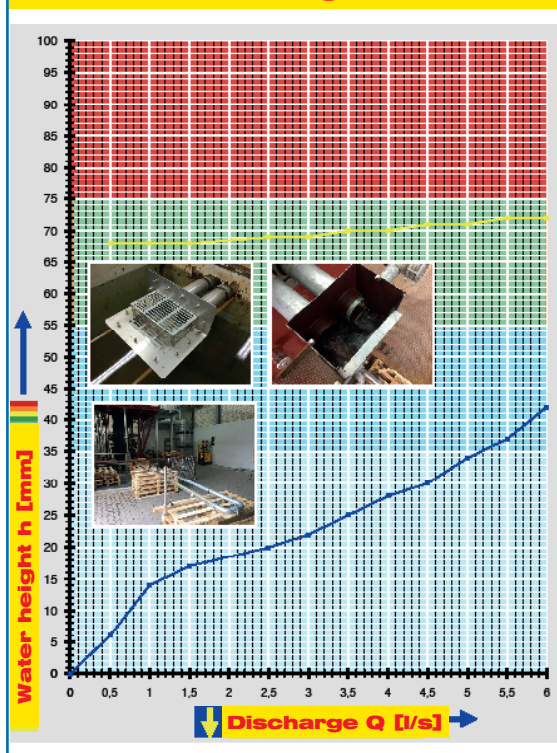
1 x Art.-No. 01401.050X Pipe with one socket

4 x Art.-No. 00911.050X Sealing elements

2 x Art.-No. 00911.100X Sealing elements

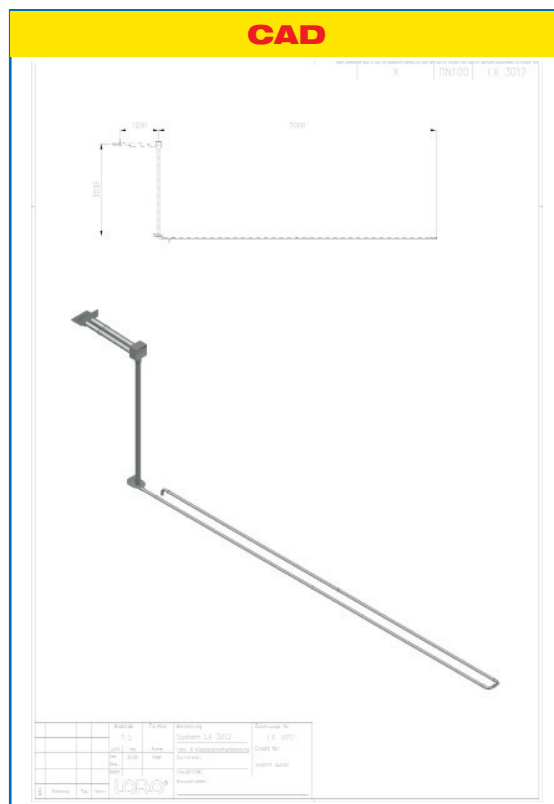
1 x Art.-No. 00986.000X Lubricant

### hQ - Discharge curve



**System power**

### CAD



**System shape**

Water height	mm	10	15	20	25	30	35	40	45	50	55	60	65	70	75	80	85
Discharge	l/s	0,7	1,2	2,5	3,5	4,5	5,1	5,8	-	-	-	-	-	-	-	-	-

Please choose a suitable drain!

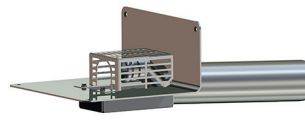
DN 100

**LX1981-3X**

Drain: Art.-No. 13461.100X

**Main drainage**Drainage of the roof terrace  
**Bonding flange 45°****LX1981-21X**

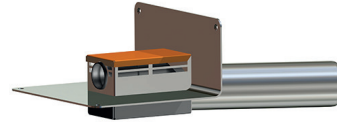
Drain: Art.-No. 13462.100X

**Main drainage**Drainage of the roof terrace  
**Bonding flange 90°****LX1990-3X**

Drain: Art.-No. 13471.100X

**Emergency drainage**Drainage of the roof terrace  
**Bonding flange 45°****LX1990-21X**

Drain: Art.-No. 13472.100X

**Emergency drainage**Drainage of the roof terrace  
**Bonding flange 90°****For installation of the collector pipe  
under the terrace covering****LX1851-4X**

Drain: Art.-No. 13612.100X

**Series 88****DUOSTREAM Main drainage**Drainage of the roof terrace (DN 100)  
Feed-through of the upper levels (DN 50)**LX1857-4X**

Drain: Art.-No. 13613.100X

**Series 88****DUOSTREAM Emergency drainage**Drainage of the roof terrace (DN 100)  
Feed-through of the upper levels (DN 50)  
with congestion element**For installation of the collector pipe in the thermal insulation****LX1907-4X**

Art.-No. 13441.BD0X

**Series 88****LORO-X DUOSTREAM®-Distant  
Multi-storey drain**Drainage of the roof terrace (DN 100)  
Feed-through of the upper levels (DN 50)**LX1908-4X**

Art.-No. 13451.BD0X

**Series 88****LORO-X DUOSTREAM®-Distant  
Multi-storey-emergency drain**Drainage of the roof terrace (DN 100)  
Feed-through of the upper levels (DN 50)  
with congestion element